

Environmental Product Declaration



THE INTERNATIONAL EPD® SYSTEM



In accordance with ISO 14025 and EN 15804:2012+A2:2019/AC:2021 for:

Safety-plus PPS fittings

This EPD of multiple products, based on the representative product "Elbow 90° Ø26 - Item n. 20388" covers all the Safety-plus fittings made of PPS. The complete list is available in paragraph "Information related on EPDs of multiple products".

from

AQUATECHNIK GROUP SPA



Programme:

The International EPD® System, www.environdec.com

Programme operator:

EPD International AB

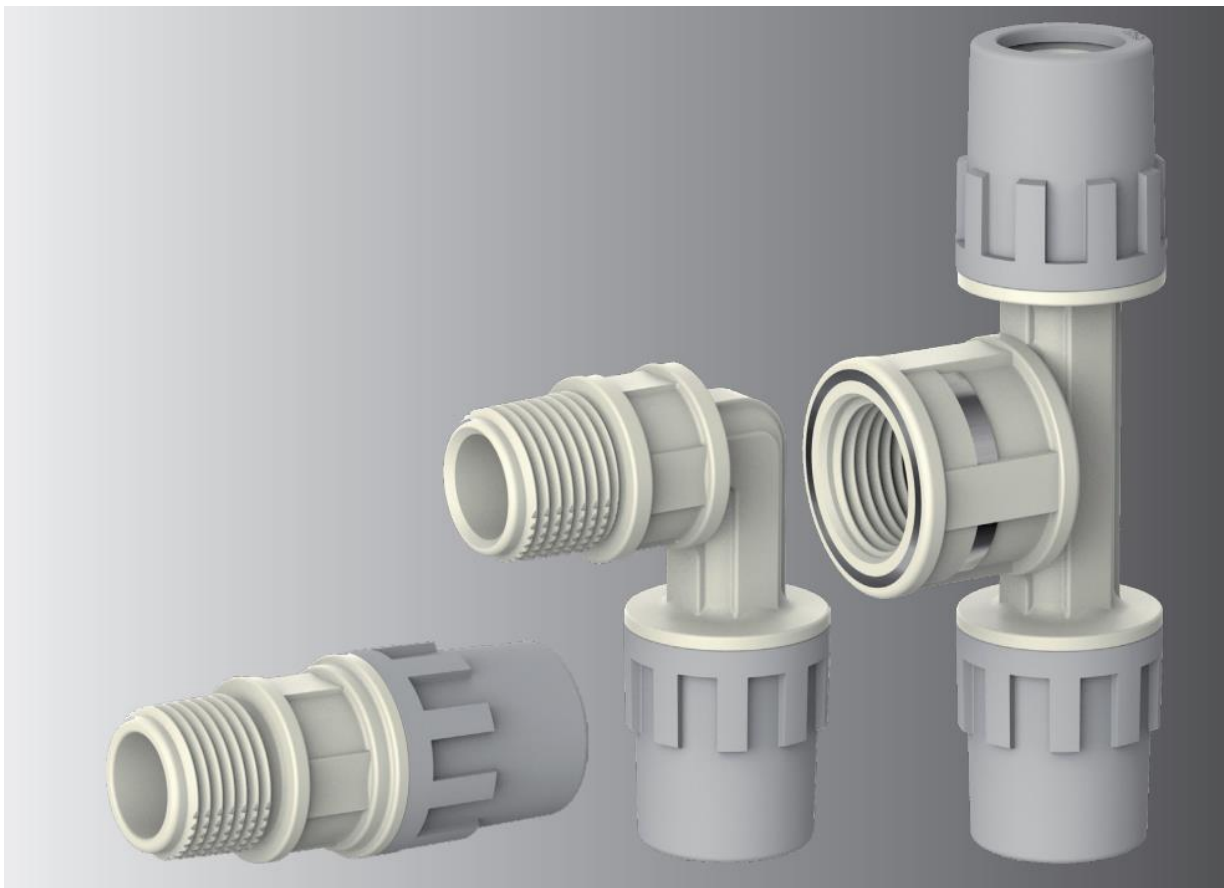
EPD registration number:

S-P-13902

Publication date:


Valid until:

An EPD should provide current information and may be updated if conditions change. The stated validity is therefore subject to the continued registration and publication at www.environdec.com.



General information

Programme:	The International EPD® System
Address:	EPD International AB Box 210 60 SE-100 31 Stockholm Sweden
Website:	www.environdec.com
E-mail:	info@environdec.com

Accountabilities for PCR, LCA and independent, third-party verification	
Product Category Rules (PCR)	
CEN standard EN 15804 serves as the Core Product Category Rules (PCR)	
Product Category Rules (PCR): PCR 2019:14 Construction products and construction services (v 1.3.3)	
PCR review was conducted by: The Technical Committee of the International EPD System. See www.environdec.com for a list of members. Review chair: Claudia A. Peña, University of Concepción, Chile. The review panel may be contacted via the Secretariat www.environdec.com/contact	
Life Cycle Assessment (LCA)	
LCA accountability: <i>Spinlife S.r.l. - Spin Off dell'Università di Padova, via Carlo Cerato 14, 35122 Padova PD, info@spinlife.it</i>	
Third-party verification	
Independent third-party verification of the declaration and data, according to ISO 14025:2006, via:	
<input checked="" type="checkbox"/> EPD verification by accredited certification body	
Third-party verification: SGS Italia S.p.A. via Caldera, 21, 20153 – Milano T +39 02 73 931 - www.it.sgs.com It's an approved certification body accountable for the third-party verification The certification body is accredited by: ACCREDIA n 0005VV	
Procedure for follow-up of data during EPD validity involves third party verifier:	
<input type="checkbox"/> Yes <input checked="" type="checkbox"/> No	

The EPD owner has the sole ownership, liability, and responsibility for the EPD.

EPDs within the same product category but registered in different EPD programmes, or not compliant with EN 15804, may not be comparable. For two EPDs to be comparable, they must be based on the same PCR (including the same version number) or be based on fully-aligned PCRs or versions of PCRs; cover products with identical functions, technical performances and use (e.g. identical declared/functional units); have equivalent system boundaries and descriptions of data; apply equivalent data quality requirements, methods of data collection, and allocation methods; apply identical cut-off rules and impact assessment methods (including the same version of characterisation factors); have equivalent content declarations; and be valid at the time of comparison. For further information about comparability, see EN 15804 and ISO 14025.

It is not recommended to use the results of modules A1-A3 without considering the results of module C.