

## Raccordi a sella a saldare Fusion outlet to weld

### Descrizione Description

A completamento dei sistemi di tubazioni fusio-technik, aquatechnik offre una vasta ed esauriente serie di raccordi realizzata in PP-R 80 Super. La gamma comprende raccordi di transizione, parti terminali realizzate con inserto in metallo filettato maschio e femmina, giunti flangiati, valvole, oltre che raccordi d'integrazione che consentono di congiungere e creare collegamenti con tutti i sistemi di tubazioni e raccordi proposti dall'azienda.

La giunzione tra le parti avviene tramite polifusione (saldatura a bicchiere), processo che garantisce la massima sicurezza di tenuta anche nelle condizioni di impiego più estreme.

La costante attenzione alle richieste e alle esigenze di mercato ha inoltre portato aquatechnik alla creazione di un apposito reparto produttivo capace di realizzare collettori e pezzi speciali su specifiche richieste di progetto.

Tale reparto è supportato da uno studio tecnico composto da personale qualificato che, oltre a gestire la parte progettuale necessaria alla realizzazione dei particolari creati su misura del cliente, e in grado di guidare lo stesso nella scelta della più appropriata tipologia di prodotto, in funzione delle condizioni d'impiego.

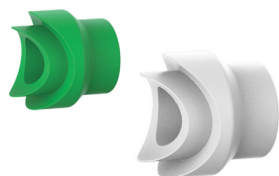
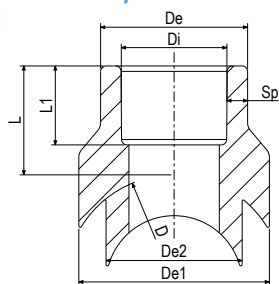
As a completion of the fusio-technik piping systems, Aquatechnik offers a wide and exhaustive range of fittings made in PP-R 80 Super. The range includes transition fittings, terminal parts realized with threaded male and female insert in metal, flange joints, valves, as well as integration fittings that allow to join and create connections with every system of pipes and fittings proposed by the company.

The junction among the parts is made by polyfusion (coupling welding), process that guarantees the highest tightness safety even in the most extreme utilization conditions.

The constant attention to the demands and requirements of the market has led Aquatechnik to the creation of special production department able to realize manifolds and special parts on specifics project demands.

This department is supported by a technical study composed of qualified staff that, not only takes care of the projects necessary to realize special parts upon customers' order, but is also able to suggest the customer the best choice of the most appropriate typology of product, according to the utilization conditions.

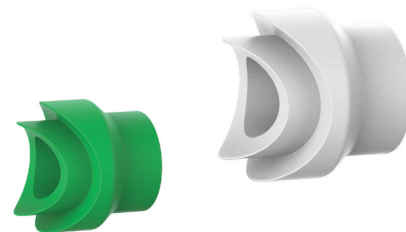
### Specifiche prodotto Product specifications



### RACCORDI A SELLA, a saldare in PP-R FUSION OUTLET, to weld in PP-R

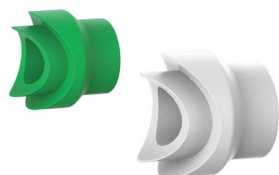
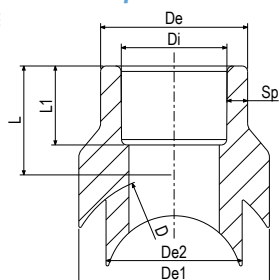
Articolo Code	SDR	Ø uscita Ø out-put	per tubo for pipe	X*	Y*	D	De	De1	De2	Di	L	L1	Sp.	Peso Wt.	Colore Colour
						mm	mm	mm	mm	mm	mm	mm	mm	gr	
650472	6	20	40	500316	50348-50348A-50378	40,0	27,0	35,0	25,0	20,0	20,0	14,5	3,50	18,7	●
650474	6	25	40	500316	50348-50348A-50378	40,0	33,0	35,0	25,0	25,0	21,5	16,0	4,00	12,9	●
650478	6	20	50	500320	50348-50348A-50378	50,0	27,0	35,0	25,0	20,0	20,0	14,5	3,50	11,5	●
650480	6	25	50	500320	50348-50348A-50378	50,0	33,0	35,0	25,0	25,0	21,5	16,0	4,00	12,9	●
650498	6	20	63 75	500340 500348	50348-50348A-50378 50348-50348A-50378	69,0	27,5	35,0	25,0	20,0	20,0	14,5	3,50	10,9	●
650500	6	25	63 75	500340 500348	50348-50348A-50378 50348-50348A-50378	69,0	33,0	35,0	25,0	25,0	21,5	16,0	4,00	12,5	●
650502	6	32	63 75	500342 500360	50352-50382 50352-50382	69,0	43,0	46,0	32,0	32,0	26,0	18,0	5,50	28,8	●
650556	6	20	90 110 125	500386 500428 500468	50348-50348A-50378 50348-50348A-50378 50348-50348A-50378	108,0	27,0	35,0	25,0	20,0	20,0	14,5	3,50	10,4	●
650558	6	25	90 110 125	500386 500428 500468	50348-50348A-50378 50348-50348A-50378 50348-50348A-50378	108,0	33,0	35,0	25,0	25,0	21,5	16,0	4,00	12,0	●
650560	6	32	90 110 125	500400 500430 500470	50352-50382 50352-50382 50352-50382	108,0	43,0	46,0	32,0	32,0	26,0	18,0	5,50	26,9	●

\*X = Articolo matrice idonea / Code suitable weld-in saddle - \*Y = Articolo fresa idonea / Code suitable miller



## Raccordi a sella a saldare Fusion outlet to weld

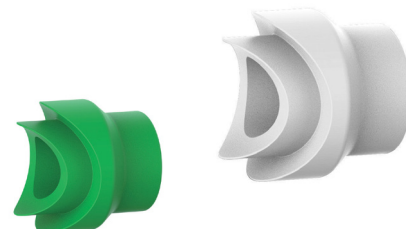
### Specifiche prodotto Product specifications



### RACCORDI A SELLA, a saldare in PP-R FUSION OUTLET, to weld in PP-R

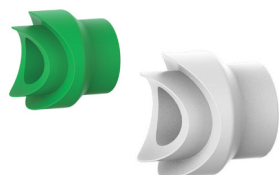
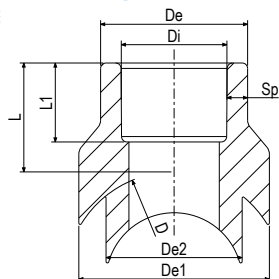
Articolo Code	SDR	Ø uscita Ø out-put	per tubo for pipe	X*	Y*	D	De	De1	De2	Di	L	L1	Sp.	Peso Wt.	Colore Colour
						mm	mm	mm	mm	mm	mm	mm	mm	gr	
650580	6	40	90	500420	50354-50384	90,0	53,5	58,0	40,0	40,0	28,0	20,5	6,75	46,0	●
650582	6	50	90	500422	50356-50386	90,0	66,0	72,0	50,0	50,0	36,0	23,5	8,00	93,0	●
650600	6	40	110	500440	50354-50384	110,0	53,5	58,0	40,0	40,0	28,0	20,5	13,50	44,8	●
650620	6	50	110	500460	50356-50386	110,0	66,0	72,0	50,0	50,0	36,0	23,5	8,00	93,0	●
650622	6	63	110	500462	50358-50388	110,0	84,0	90,0	63,0	63,0	40,0	27,5	10,50	161,0	●
650638	6	40	125	500472	50354-50384	125,0	53,5	58,0	40,0	40,0	28,0	20,5	6,75	44,8	●
650640	6	50	125	500480	50356-50386	125,0	66,0	72,0	50,0	50,0	36,0	23,5	8,00	91,4	●
650660	6	63	125	500500	50358-50388	125,0	84,0	90,0	63,0	63,0	40,0	27,5	10,50	165,4	●
650672	6	20	160	500508 500586	50348-50348A-50378 50348-50348A-50378	180,0	27,0	35,0	25,0	20,0	20,0	14,5	3,50	10,2	●
650674	6	25	160	500508 500586	50348-50348A-50378 50348-50348A-50378	180,0	33,0	35,0	25,0	25,0	21,5	16,0	4,00	11,8	●
650676	6	32	160	500510 500588	50352-50382 50352-50382	180,0	43,0	46,0	32,0	32,0	26,0	18,0	5,50	26,9	●
650678	6	40	160	500512 500590	50354-50384 50354-50384	180,0	53,5	58,0	40,0	40,0	28,0	20,5	6,75	42,8	●
650680	6	50	160	500520	50356-50386	160,0	66,0	72,0	50,0	50,0	36,0	23,5	8,00	93,2	●
650700	6	63	160	500540	50358-50388	160,0	84,0	90,0	63,0	63,0	40,0	27,5	10,50	154,7	●
650720	6	75	160	500560	50360-50390	160,0	101,0	103,0	75,0	75,0	42,0	30,0	13,00	202,8	○
650740	6	90	160	500580	50362-50392	160,0	115,0	120,0	90,0	90,0	45,0	33,0	12,50	310,5	○
650760	6	50	200	500600	50356-50386	200,0	66,0	72,0	50,0	50,0	36,0	23,5	8,00	87,0	●
650780	6	63	200	500620	50358-50388	200,0	84,0	90,0	63,0	63,0	40,0	27,5	10,50	146,9	●
650800	6	75	200	500640	50360-50390	200,0	101,0	103,0	75,0	75,0	42,0	30,0	13,00	201,3	○
650820	6	90	200	500660	50362-50392	200,0	115,0	120,0	90,0	90,0	45,0	33,0	12,50	295,8	○
650840	6	110	200	500680	50364-50394	200,0	147,0	150,0	110,0	110,0	50,0	37,0	18,50	723,1	○
650860	6	125	200	500700	50366-50396	200,0	164,0	170,0	125,0	125,0	56,0	40,0	19,50	841,1	○
650872	6	20	250	500702 500822	50348-50348A-50378 50348-50348A-50378	282,5	27,0	35,0	25,0	20,0	20,0	14,5	3,50	9,9	●
650874	6	25	250	500702 500822	50348-50348A-50378 50348-50348A-50378	282,5	33,0	35,0	25,0	25,0	21,5	16,0	4,00	11,6	●
650876	6	32	250	500704 500824	50352-50382 50352-50382	282,5	43,0	46,0	32,0	32,0	26,0	18,5	5,50	26,4	●
650878	6	40	250	500706 500826	50354-50384 50354-50384	282,5	53,5	58,0	40,0	40,0	28,0	25,5	6,75	42,9	●
650880	6	50	250	500720	50356-50386	250,0	66,0	72,0	50,0	50,0	36,0	23,5	8,00	85,9	●
650900	6	63	250	500740	50358-50388	250,0	84,0	90,0	63,0	63,0	40,0	27,5	10,50	144,0	●
650920	6	75	250	500760	50360-50390	250,0	101,0	103,0	75,0	75,0	42,0	30,0	13,00	191,7	○
650940	6	90	250	500780	50362-50392	250,0	115,0	135,0	90,0	90,0	45,0	33,0	4,00	282,6	○
650960	6	110	250	500800	50364-50394	250,0	147,0	150,0	110,0	110,0	50,0	37,0	18,50	570,0	○
650980	6	125	250	500820	50366-50396	250,0	164,0	170,0	125,0	125,0	56,0	37,0	19,50	790,0	○

\*X = Articolo matrice idonea / Code suitable weld-in saddle - \*Y = Articolo fresa idonea / Code suitable miller



## Raccordi a sella a saldare Fusion outlet to weld

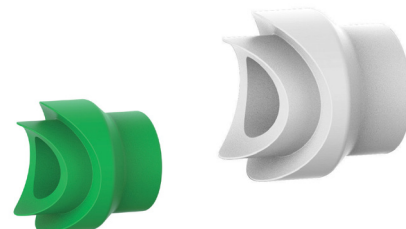
### Specifiche prodotto Product specifications



### RACCORDI A SELLA, a saldare in PP-R FUSION OUTLET, to weld in PP-R

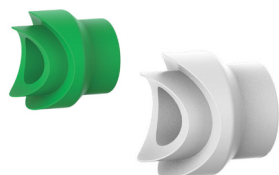
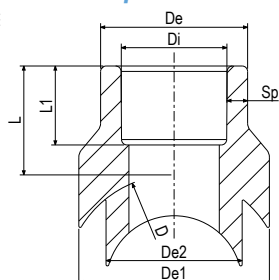
Articolo Code	SDR	Ø uscita Ø out-put	per tubo for pipe	X*	Y*	D	De	De1	De2	Di	L	L1	Sp.	Peso Wt.	Colore Colour
						mm	mm	mm	mm	mm	mm	mm	mm	gr	
650994	6	50	315	500828	50356-50386	315,0	66,0	72,0	50,0	50,0	36,0	23,5	8,00	84,6	●
650996	6	63	315	500830	50358-50388	315,0	84,0	90,0	63,0	63,0	40,0	27,5	10,50	140,0	●
650998	6	75	315	500832	50360-50390	315,0	101,0	103,0	75,0	75,0	42,0	30,0	13,00	207,0	○
651000	6	90	315	500832	50362-50392	315,0	115,0	120,0	90,0	90,0	45,0	33,0	12,50	81,9	○
651002	6	110	315	500832	50364-50394	315,0	147,0	151,0	110,0	110,0	50,0	37,0	18,50	763,0	○
651004	6	125	315	500832	50366-50396	315,0	164,0	170,0	125,0	125,0	58,0	40,0	19,50	771,0	○
651012	6	20	355	500842	50348-50348A-50378	377,5	27,0	35,0	25,0	20,0	20,0	14,5	3,50	9,9	●
			400	500842	50348-50348A-50378										
			450	500842	50378										
			500	500842	50378										
			560	500842	50378										
630	500842	50378													
651014	6	25	355	500842	50348-50348A-50378	377,5	33,0	35,0	25,0	25,0	21,5	16,0	4,00	11,6	●
			400	500842	50348-50348A-50378										
			450	500842	50378										
			500	500842	50378										
			560	500842	50378										
630	500842	50378													
651016	6	32	355	500844	50352-50382	377,5	43,0	45,0	32,0	32,0	26,0	18,0	5,50	26,0	●
			400	500844	50352-50382										
			450	500844	50382										
			500	500844	50382										
			560	500844	50382										
630	500844	50382													
651018	6	40	355	500846	50354-50384	377,5	43,0	58,0	40,0	40,0	28,0	20,5	6,75	41,9	●
			400	500846	50354-50384										
			450	500846	50384										
			500	500846	50384										
			560	500846	50384										
630	500846	50384													
651020	6	50	355	500848	50356-50386	377,5	66,0	72,0	50,0	50,0	36,0	23,5	8,00	83,0	●
			400	500848	50356-50386										
			450	500860	50386										
651021	6	50	500	500874	50386	565,0	66,0	72,0	50,0	50,0	36,0	25,0	8,00	82,0	●
			560	500874	50386										
			630	500874	50386										
651022	6	63	355	500850	50358-50388	377,5	84,0	90,0	63,0	63,0	40,0	27,5	10,50	140,6	●
			400	500850	50358-50388										
			450	500864	50388										
651023	6	63	500	500876	50388	565,0	84,0	90,0	63,0	63,0	40,0	29,0	10,50	137,0	●
			560	500876	50388										
			630	500876	50388										
651024	6	75	355	500852	50360-50390	355,0	101,0	103,0	75,0	75,0	42,0	30,0	13,00	196,0	○
651026	6	90	355	500854	50362-50392	355,0	115,0	120,0	90,0	90,0	45,0	33,0	12,50	268,0	○
651028	6	110	355	500856	50364-50394	355,0	147,0	151,0	110,0	110,0	50,0	37,0	18,50	518,0	○
651030	6	125	355	500858	50366-50396	355,0	164,0	170,0	125,0	125,0	58,0	40,0	19,50	729,0	○

\*X = Articolo matrice idonea / Code suitable weld-in saddle - \*Y = Articolo fresa idonea / Code suitable miller



## Raccordi a sella a saldare Fusion outlet to weld

### Specifiche prodotto Product specifications



### RACCORDI A SELLA, a saldare in PP-R FUSION OUTLET, to weld in PP-R

Articolo Code	SDR	Ø uscita Ø out-put	per tubo for pipe	X*	Y*	D	De	De1	De2	Di	L	L1	Sp.	Peso Wt.	Colore Colour
						mm	mm	mm	mm	mm	mm	mm	mm	gr	
651040	6	75	400	500852	50360-50390	400,0	101,0	103,0	75,0	75,0	42,0	30,0	13,00	197,0	○
			450	500866	50390										
651041	6	75	500	500878	50390	540,0	101,0	103,0	75,0	75,0	42,0	30,0	13,00	192,0	○
			560	500886	50390										
			630	500894	50390										
651042	6	90	400	500854	50360-50390	425,0	115,0	120,0	90,0	90,0	45,0	33,0	12,50	265,0	○
			450	500868	50392										
651043	6	90	500	500880	50392	565,0	115,0	120,0	90,0	90,0	45,0	33,0	12,50	265,0	○
			560	500888	50392										
			630	500896	50392										
651044	6	110	400	500856	50364-50394	425,0	147,0	151,0	110,0	110,0	50,0	37,0	18,50	516,0	○
			450	500870	50394										
651045	6	110	500	500882	50394	500,0	147,0	151,0	110,0	110,0	50,0	37,0	18,50	523,0	○
			560	500890	50394										
651047	6	110	630	500898	50394	630,0	147,0	151,0	110,0	110,0	50,0	37,0	18,50	518,0	○
651046	6	125	400	500858	50366-50396	425,0	164,0	170,0	125,0	125,0	58,0	40,0	19,50	722,0	○
			450	500872	50396										
651048	6	125	500	500884	50396	500,0	164,0	170,0	125,0	125,0	58,0	40,0	19,50	726,0	○
			560	500892	50396										
651049	6	125	630	500900	50396	630,0	164,0	170,0	125,0	125,0	58,0	40,0	19,50	711,0	○

\*X = Articolo matrice idonea / Code suitable weld-in saddle - \*Y = Articolo fresa idonea / Code suitable miller

### Caratteristiche tecniche Technical specifications

- Materia prima:**
- da uscita Ø 20 a 63 mm: PP-R 80 Super (polipropilene copolimero random)
  - da uscita Ø 75 a 125 mm: PP-RCT WOR (polipropilene copolimero random a cristallinità modificata, con accresciuta resistenza all'ossidazione)

- Colore:**
- da uscita Ø 20 a 63 mm: verde
  - da uscita Ø 75 a 125 mm: bianco

**Misure:** per tubi da Ø 40 a Ø 630 mm

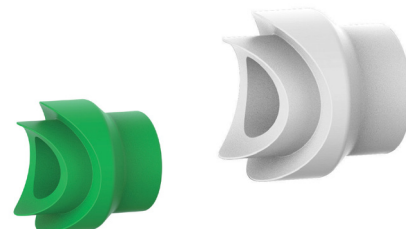
**Marcatura:** tutti i raccordi della gamma fusio-technik (salvo quando le ridotte dimensioni dei pezzi non lo consentono) riportano i riferimenti aziendali, il periodo di fabbricazione, le misure del pezzo

- Raw material:**
- from out-put from Ø 20 to 63 mm: PP-R 80 Super (polypropylene random copolymer)
  - from out-put from Ø 75 to 125 mm: PP-RCT WOR (polypropylene random copolymer with modified crystallinity, with increased resistance to oxidation)

- Colour:**
- from out-put from Ø 20 to 63 mm: green
  - from out-put from Ø 75 to 125 mm: white

**Sizes:** for pipes from Ø 40 to Ø 630 mm

**Marking:** all the fittings of the fusio-technik range (except when the small part dimensions do not allow so) carry the company details, the production period, the part dimensions



## Raccordi a sella a saldare Fusion outlet to weld

### Norme di riferimento Reference standards

Prodotto in conformità ai requisiti richiesti dalla normativa Europea EN ISO 15874, DIN 8077 e 8078, al DM 174 e ASTM F2389.

*Produced in accordance with the requirement of the European standard EN ISO 15874, DIN 8077 and DIN 8078, DM 174 and ASTM F2389.*

### Campi di impiego Fields of application



 Consigliato per vantaggi tecnici  
*Recommended for technical advantages*

 Possibile impiego  
*Possible use*

Utilizzabili con tutte le gamme di tubazioni fusio-tecnik nei relativi ambiti di impiego.

Raccorderia idonea al trasporto di acqua potabile calda e fredda.

Per la correlazione tra pressione e temperatura d'esercizio, fare sempre riferimento alle condizioni d'esercizio.

*They can be used with every fusio-technik pipe ranges in their related application fields.*

*Fittings suitable for the transport of hot and cold drinking water.*

*For the correlation between pressure and operating temperature, always refer to the operating conditions defined.*

### Campi di impiego Fields of application

Utilizzabili con tutte le gamme di tubazioni fusio-tecnik nei relativi ambiti di impiego.

Raccorderia idonea al trasporto di acqua potabile calda e fredda.

Per la correlazione tra pressione e temperatura d'esercizio, fare sempre riferimento alle condizioni d'esercizio definite per le tubazioni, riportate nella relativa documentazione tecnica.

Per la realizzazione di impianti veicolanti liquidi e/o sostanze diverse, consultare preventivamente i nostri uffici tecnici (tel. +39 (0)331 307015, fax +39 (0)331 306923, e-mail: ufficio.tecnico@aquatechnik.it).

*They can be used with every fusio-technik pipe ranges in their related application fields.*

*Fittings suitable for the transport of hot and cold drinking water.*

*For the correlation between pressure and operating temperature, always refer to the operating conditions defined for the pipes, shown in the relative technical documentation.*

*To set up for the conveyance of liquids and/or different substances, contact our technical department (tel. +39 0331 307015, fax +39 0331 306923, e-mail: ufficio.tecnico@aquatechnik.it).*

### Voce di capitolato Specification item

Serie completa di raccordi a sella per innesto diretto nelle tubazioni da Ø 40 a 630 mm, SDR 5, realizzata completamente in PP-R 80 Super (polipropilene copolimero random) e PP-RCT WOR (polipropilene copolimero random a cristallinità modificata, con accresciuta resistenza all'ossidazione) prodotto mediante stampaggio. Giunzione con tubazioni mediante saldatura a tasca (polifusione). Prodotto in conformità ai requisiti richiesti dalla normativa Europea UNI EN ISO 15874-3, DIN 8077 e 8078, al DM 174 e ASTM F2389 per il trasporto di acqua calda e fredda destinata al consumo umano, per riscaldamento, condizionamento, aria compressa ed impianti meccanici in genere. Adatto alla veicolazione di fluidi ad una temperatura massima in esercizio in continuo di 80°C per 10 anni ad una pressione massima di 10,0 bar (con SF=1,5). Adatto al contatto con alimenti ed acqua potabile. Colore: da uscita Ø 20 a 63 mm verde, da uscita Ø 75 a 125 mm bianco. Marca: aquatechnik.

*Complete range of fusion outlet fittings for direct connection in the pipes from Ø 40 to 630 mm, SDR 5, completely made in PP-R 80 Super (polypropylene random copolymer) and PP-RCT WOR (polypropylene random copolymer with modified crystallinity, with increased resistance to oxidation) by injection moulding. Junction with pipings through coupling welding (polyfusion). Produced in accordance with the requirements of the European Standard UNI EN ISO 15874-3, DIN 8077/8078, DM 174 and ASTM F2389, for the transport of potable hot and cold water intended for human consumption, for warming, conditioning, compressed air and mechanical systems in general. Suitable for the conveyance of fluids at a maximum continuous working temperature of 80°C for 10 years at a maximum pressure of 10,0 bar (with SF=1,5). It is suitable for the contact with foods and potable water. Colour: from out-put Ø 20 to 63 mm green, from out-put Ø 75 to 125 mm white. Brand: Aquatechnik.*